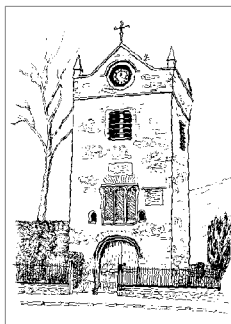
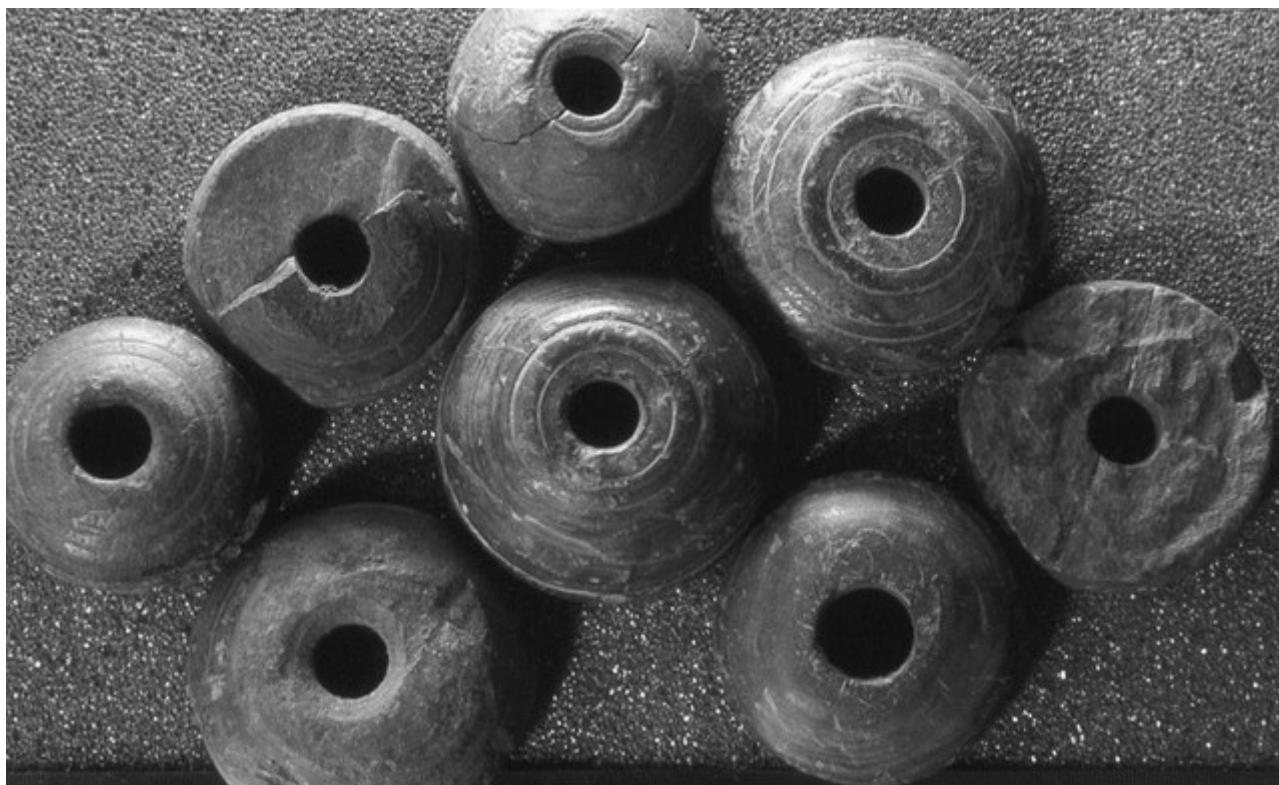


£1.50



Staveley & District History Society



In this issue:

From the former Events Secretary
Kentmere Archaeological Project
Filming in Staveley
Tales from the Tapes: Farming at Misset Part 1

JOURNAL

WINTER 2018 /19

ISSUE 44

OFFICERS OF THE SOCIETY

President: Clare Brockbank MBE

Chairman: John Hiley
Woodside Cottage, Ings
Kendal, LA8 9PY
01539 821524
e-mail: chair@sdhs.org.uk

Vice-Chairman: Mike Houston

General Secretary: Peter Lansberry
Middle Holme, Kentmere
Kendal, LA8 9JP
01539-821117
e-mail: sec@sdhs.org.uk

Treasurer: Roger Collinge
Laneside, Hall Lane
Staveley, LA8 9QZ
01539-822412
e-mail: treas@sdhs.org.uk

Events Secretary: David Telford-Reed
01539-822063
e-mail: events@sdhs.org.uk

Journal Editor: John Hiley
e-mail: journal@sdhs.org.uk

Committee members: Margaret Beck, Iain Johnston, Don Morris

Meetings of the Society take place at 7.30 pm (2.30pm in December and January) on the third Thursday of the month in Ings Parish Hall during the autumn and spring.

Contributions for the Journal in the form of letters to the Editor or short articles on Staveley and District History should be sent to the Editor at the address above.

The society also has a web site at <http://www.sdhs.org.uk>

SOCIETY PUBLICATIONS

A Lakeland Valley Through Time – A history of Staveley, Kentmere & Ings, first published 1995. 124pp, soft covers, **£6.95**

A Lakeland Valley in Pictures – DVD of pictures from the Society's collection, (2002 -16 mins), plus film of 2004 floods (12 mins) **£8** to members

OCCASIONAL PAPERS

1. Old Hall, Nether Staveley - *report by Field Walking Group* – 1992 **60p**
2. Hugill industries in the 1st half of the 19th century - *Mary Atkin* 1992 **30p**
3. Staveley Hall/Mill – *report by the Field Walking Group* 1992 **30p**
4. Emigrants (Batesons) from Hugill to New York 1838 – *Joe Scott* 1996 **60p**
5. High House, Hugill – *Morrison Harding & Joe Scott* 1996 **60p**
6. The Staveley Co-operative Bobbin Mfg Society 1880-1900 *Joe Scott* 1996 **60p**
7. The growth of Staveley Village 1300 - 1997 – *Harding & Scott* 1997 **90p**
8. Staveley Banks and Gypsy Well – *Joe Scott* 1998 **60p**
9. Looking back to my childhood – 1920-30 – *Chris Walker* 1993 **30p**
10. The Copper Kettle – *Hannah Woodward (prize entry)* 1998 **30p**
11. Harry Read (1848-1928) – *J.C. Robinson (edited by Joe Scott)* 1998 **60p**
12. Kentmere Hall and the Gilpins 1373-1672 – *Joe Scott* 1999 **90p**
13. Was there a Staveley Flood about 1580? – *Joe Scott* 2000 **30p**
14. The Extractive Industries of Kentmere, Lead-Slate-Diatomite – *C. Gregory* 2000 **£1.50**
15. Ashes Farm 1597-2000 – *Joe Scott* 2000 **60p**
16. St. Margaret's Chapel Tower – *Bill Bethom, Ron Parkinson & Joe Scott* 2001 **£1.00**
17. The Kentmere Reservoir and local Water Mills – *Joe Scott* 2003 **£1.00**
18. The Abbey Home 1900-1956 – *Joe Scott* 2004 **90p**
19. Staveley Banks and the Railway Cottages – *John & Tony Berry* 2004 **£1.20**
20. The Kentmere Quarter Pastures – *Mary Atkin* 2005 **£1.50**
21. Staveley Hall/Mill – *A.A. Lord* 2006 **60p**
22. Thomas Taylor & Low Mill – *John Berry* 2007 **£1.50**
23. A History of Methodism in Staveley – *Marie Holland (Reprint)* 2007 **90p**
24. The Eagle & Child – *John Berry* 2009 **£1.50**
25. A Prehistoric and Romano British Field Survey of Kentmere – *Robert Ridley* 2009 **£1.50**
26. A GPS survey at Black Beck near Skeggeswater – *Robert Ridley* 2011 **£1.00**
27. Barley Bridge – *Alan Lord* 2014 **£1.00**

PROGRAMME 2019

WINTER TALKS

Thursdays at Ings Parish Hall, LA8 9PY

2019

January 17. 2.30pm. ‘300 years of schooling in Satterthwaite and Rusland’ with Suzanne Tiplady. Suzanne co-authored ‘The Parish of Satterthwaite: A Social History’ published in 2014.

February 21. 7.30pm. ‘Bank barns, Boskins and Bee Boles (old Lakeland farm buildings)’ with Andy Lowe. Another welcome return from an old friend of the Society.

March 21. 7.30pm. ‘From log-boats to steam launches in the Lake District’ with Diane Matthews. Diane is a patron of the Lakeland Arts Trust, which owns the Windermere Steamboat Museum founded by her father George Harry Pattinson.

April 18. 7.30pm. AGM and members evening

SUMMER WALKS

Thursdays: May 16th, June 20th and July 18th
Programme to be advised

www.sdhs.org.uk

Printed by Stramongate Press, Kendal.