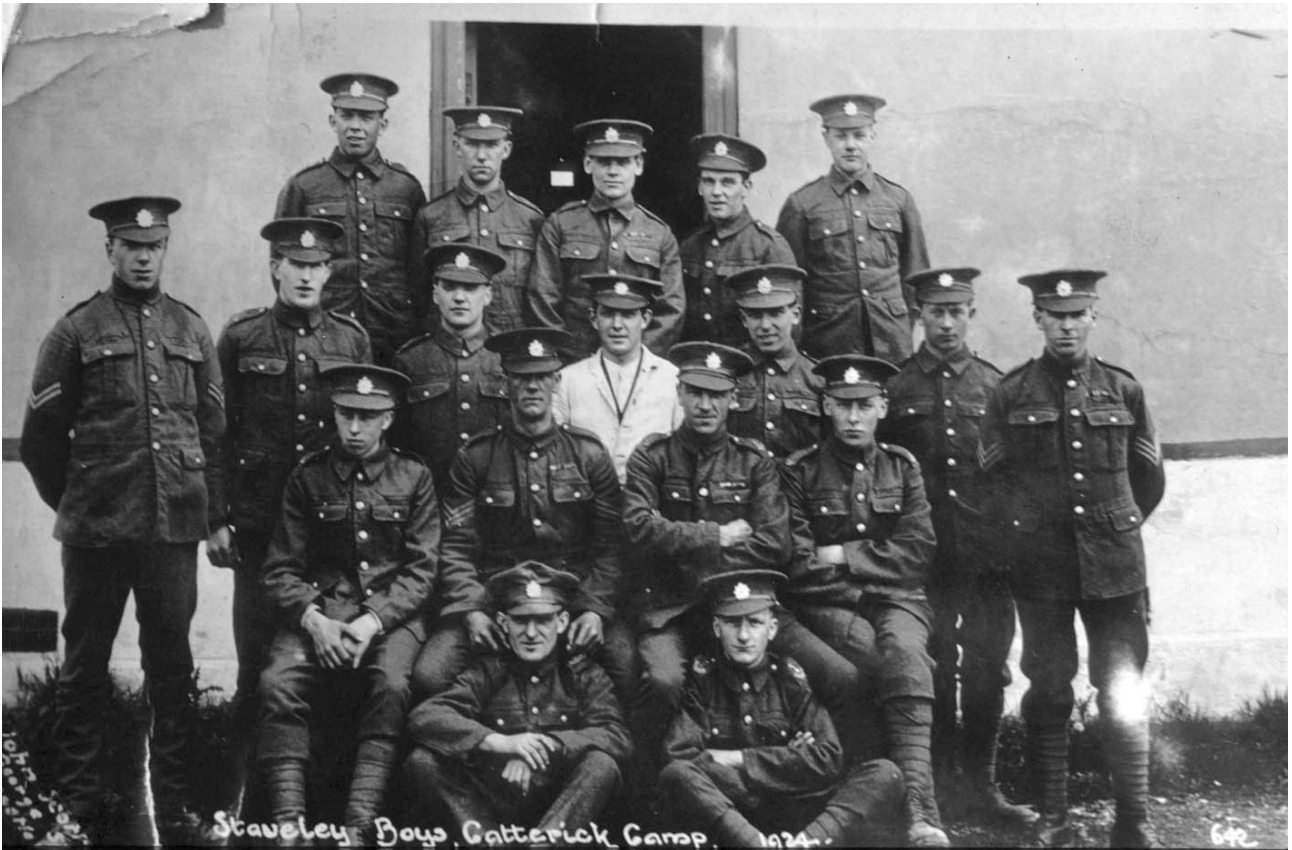


# Staveley & District History Society



**In this issue:**  
From the Chair  
The Diamond Jubilee of Staveley Operatic Society  
Summer Walks  
The WW1 letters of Murray Crofts  
Growing up in the Abbey Orphanage

## JOURNAL

SUMMER 2014

ISSUE 31

# OFFICERS OF THE SOCIETY

**President:** Clare Brockbank MBE

**Chairman:** John Hiley  
Woodside Cottage, Ings  
Kendal, LA8 9PY  
01539 821524  
e-mail: [chair@sdhs.org.uk](mailto:chair@sdhs.org.uk)

**Vice-Chairman:** Mike Houston

**General Secretary:** Peter Lansberry  
Middle Holme, Kentmere  
Kendal, LA8 9JP  
01539-821117  
e-mail: [sec@sdhs.org.uk](mailto:sec@sdhs.org.uk)

**Treasurer:** Roger Collinge  
Laneside, Hall Lane  
Staveley, LA8 9QZ  
01539-822412  
e-mail: [treas@sdhs.org.uk](mailto:treas@sdhs.org.uk)

**Events Secretary:** Don Morris  
01539-821224  
e-mail: [events@sdhs.org.uk](mailto:events@sdhs.org.uk)

**Journal Editor:** John Hiley  
e-mail: [journal@sdhs.org.uk](mailto:journal@sdhs.org.uk)

**Committee members:** Margaret Beck, Iain Johnston

Meetings of the Society take place at 7-30 pm on the second Tuesday of the month in Staveley School during the autumn and spring.

Contributions for the Journal in the form of letters to the Editor or short articles on Staveley and District History should be sent to the Editor at the address above.

The society also has a web site at <http://www.sdhs.org.uk>

# SOCIETY PUBLICATIONS

**A Lakeland Valley Through Time** – A history of Staveley, Kentmere & Ings, first published 1995. 124pp, soft covers, **£6.95**

**A Lakeland Valley in Pictures** – DVD of pictures from the Society's collection, (2002 -16 mins), plus film of 2004 floods (12 mins) **£8** to members

## OCCASIONAL PAPERS

1. Old Hall, Nether Staveley - *report by Field Walking Group* – 1992 **60p**
2. Hugill industries in the 1<sup>st</sup> half of the 19<sup>th</sup> century - *Mary Atkin* 1992 **30p**
3. Staveley Hall/Mill – *report by the Field Walking Group* 1992 **30p**
4. Emigrants (Batesons) from Hugill to New York 1838 – *Joe Scott* 1996 **60p**
5. High House, Hugill – *Morrison Harding & Joe Scott* 1996 **60p**
6. The Staveley Co-operative Bobbin Mfg Society 1880-1900 *Joe Scott* 1996 **60p**
7. The growth of Staveley Village 1300 to 1997 – *Morrison Harding & Joe Scott*  
1997- **90p**
8. Staveley Banks and Gypsy Well – *Joe Scott* 1998 **60p**
9. Looking back to my childhood – 1920-30 – *Chris Walker* 1993 **30p**
10. The Copper Kettle – *Hannah Woodward (prize entry)* 1998 **30p**
11. Harry Read (1848-1928) – *J.C. Robinson (edited by Joe Scott)* 1998 **60p**
12. Kentmere Hall and the Gilpins 1373-1672 – *Joe Scott* 1999 **90p**
13. Was there a Staveley Flood about 1580? – *Joe Scott* 2000 **30p**
14. The Extractive Industries of Kentmere, Lead-Slate-Diatomite – *Christopher Gregory* 2000 - **£1.50**
15. Ashes Farm 1597-2000 – *Joe Scott* 2000 **60p**
16. St. Margaret's Chapel Tower – *Bill Bethom, Ron Parkinson & Joe Scott* 2001 **£1.00**
17. The Kentmere Reservoir and local Water Mills – *Joe Scott* 2003 **£1.00**
18. The Abbey Home 1900-1956 – *Joe Scott* 2004 **90p**
19. Staveley Banks and the Railway Cottages – *John & Tony Berry* 2004 **£1.20**
20. The Kentmere Quarter Pastures – *Mary Atkin* 2005 **£1.50**
21. Staveley Hall/Mill – *A.A. Lord* 2006 **60p**
22. Thomas Taylor & Low Mill – *John Berry* 2007 **£1.50**
23. A History of Methodism in Staveley – *Marie Holland (Reprint)* 2007 **90p**
24. The Eagle & Child – *John Berry* 2009 **£1.50**
25. A Prehistoric and Romano British Field Survey of Kentmere – *Robert Ridley*  
2009 **£1.50**
26. A GPS survey at Black Beck near Skeggleswater - *Robert Ridley* 2011 **£1.00**
27. Barley Bridge – *Alan Lord* 2014 **£1.00**

# PROGRAMME 2014 - 15

## 2014

**Oct 14: Lakeland Dialect and its origin - Jean Scott-Smith.** Jean is a native of Shap and one of the founders of the Shap History Society.

**Nov 11: The Life and Times of Sir John Barrow - Jack Rice.** Jack is a retired naval officer, and was a leading light in the recent restoration of the Hoad Monument.

**Dec 9: Ordnance Survey in South Lakeland - John Parker.** John spent a lifetime with the OS and has produced his own atlas of the Lakes.

## 2015

**Jan 13: The Water Mills of the lower Kent - Iain Johnston.** This is the widely anticipated second part of our ex chairman's investigation into this topic.

**Feb 10: Through Lakeland by Stagecoach - Janet Niepokojczyka.** Janet, who hales from Pontefract, is a new addition to our portfolio of speakers.

**Mar 10: Slate Quarrying in the Lake District - Andy Lowe.** Andy has lectured to us on many occasions and requires no introduction.

**April 14: Annual General Meeting and Members' Evening.**